



**India Meteorological Department
(Ministry of Earth Sciences)**

BULLETIN NO. 9 (BOB/06/2022)

TIME OF ISSUE:0100 HOURS IST

DATED: 16.08.2022

FROM: INDIA METEOROLOGICAL DEPARTMENT (FAX NO. 24643965/24699216/24623220)

TO: CONTROL ROOM, NDM, MINISTRY OF HOME AFFAIRS (FAX.NO. 23093750)

CONTROL ROOM NDMA (FAX.NO. 26701729)

CABINET SECRETARIAT (FAX.NO.23012284, 23018638)

PS TO HON'BLE MINISTER FOR S & T AND EARTH SCIENCES (FAX NO.23316745)

SECRETARY, MOES (FAX NO. 24629777)

H.Q. (INTEGRATED DEFENCE STAFF AND CDS) (FAX NO. 23005137/23005147)

DIRECTOR GENERAL, DOORDARSHAN (23385843)

DIRECTOR GENERAL, AIR (23421105, 23421219)

PIB MOES (FAX NO. 23389042)

UNI (FAX NO. 23355841)

D.G. NATIONAL DISASTER RESPONSE FORCE (NDRF) (FAX NO. 26105912, 2436 3260)

DIRECTOR, PUNCTUALITY, INDIAN RAILWAYS (FAX NO. 23388503)

CHIEF SECRETARY, ODISHA (FAX NO. 0674-2536660)

CHIEF SECRETARY, WEST BENGAL (FAX NO. 033-22144328)

CHIEF SECRETARY, TAMILNADU (FAX NO. 044-25672304)

ADMINISTRATOR, ANDAMAN & NICOBAR ISLANDS (FAX NO. 03192- 232656)

CHIEF SECRETARY, PUDUCHERRY (FAX NO 0413-2334145)

CHIEF SECRETARY, ANDHRA PRADESH (FAX NO. 0863-2441029, 08645-246600)

CHIEF SECRETARY, GOVT. OF CHATTISGARH (FAX NO. 771-2221206)

CHIEF SECRETARY, GOVT. OF JHARKHAND (FAX NO. 651-2400255)

CHIEF SECRETARY, GOVT. OF MADHYA PRADESH (FAX NO. 755-2441076)

CHIEF SECRETARY, GOVT. OF MAHARASHTRA (FAX NO. 022- 22028594)

CHIEF SECRETARY, GUJARAT (FAX NO. 079-23250305)

CHIEF SECRETARY, DAMAN & DIU (FAX NO. 0260-2230775)

CHIEF SECRETARY, DADRA & NAGAR HAVELI (FAX NO. 0260-2645466)

CHIEF SECRETARY, RAJASTHAN (FAX NO. 141-2227114)

Sub: Depression over East Madhya Pradesh

The Depression over East Madhya Pradesh moved west-northwestwards with a speed of 15 kmph during last 6 hours and lay centered at 2330 hours IST of 15th August over same region near latitude 23.6°N & longitude 79.0°E, 40 km east-southeast of Sagar (Madhya Pradesh) and 290 km east-southeast of Guna (Madhya Pradesh).

It is very likely to continue to move west-northwestwards and weaken gradually to a well marked low pressure area during next 12 hours.

Warnings:

Rainfall:

West Madhya Pradesh: Rainfall at most places with heavy to very heavy rainfall at isolated places on 16th August.

East Rajasthan: Rainfall at most places with heavy to very heavy rainfall at isolated places on 16th August.

Gujarat Region: Rainfall at most places with heavy to very heavy rainfall at isolated places on 16th August.

East Madhya Pradesh: Rainfall at many places with heavy rainfall at isolated places very likely on 16th August.

Vidarbha: Rainfall at many places with heavy rainfall at isolated places on 16th August.

System is under continuous surveillance and the next message will be issued at 0830 hours IST of today, the 16th August, 2022.

(Surendra Pratap Singh)
Scientist C, Cyclone Warning Division, New Delhi

Copy to: ACWC Mumbai/ ACWC Kolkata/ ACWC Chennai/ CWC Bhubaneswar/CWC Visakhapatnam/CWC Ahmedabad/ MO Port Blair/MC Raipur/MC Bhopal/MC Hyderabad/RMC Nagpur/MC Goa/MC Bengaluru/CWC Thiruvananthapuram

LEGEND: Heavy Rainfall: 64.5 to 115.5mm, **Very Heavy Rainfall:** 115.6 to 204.4mm **Most Places:** more than 76% of total stations, **Isolated Places:** Less than 25% of total

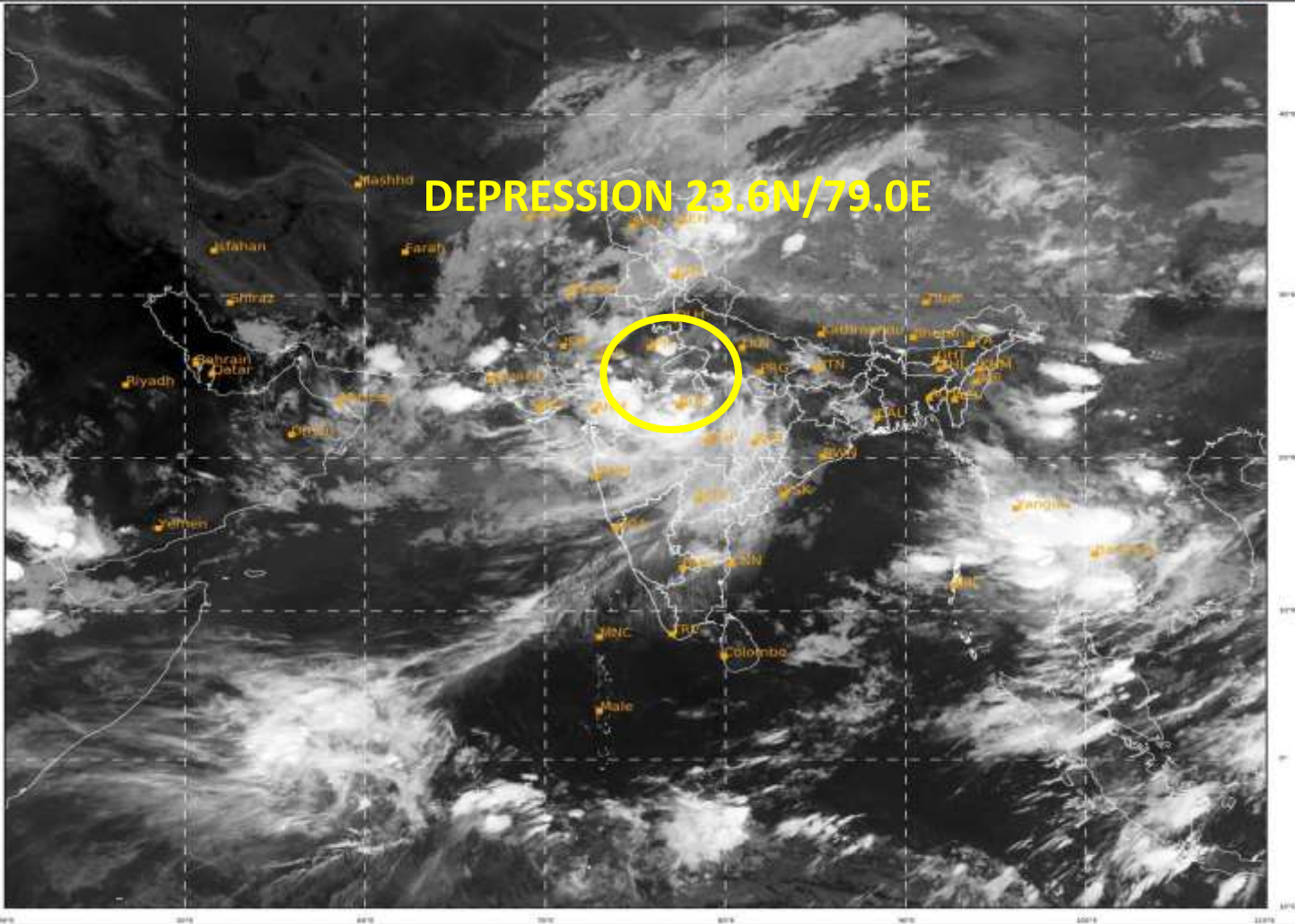


OBSERVED AND FORECAST TRACK OF DEPRESSION OVER EAST MADHYA PRADESH BASED ON 1800 UTC OF 15th AUGUST, 2022.



DATE/TIME IN UTC
IST=UTC + 0530
L: LOW PRESSURE AREA
WML: WELL MARKED LOW PRESSURE AREA
D: DEPRESSION (17-27 KT)
DD: DEEP DEPRESSION (28-33 KT)
CS: CYCLONIC STORM (34-47 KT)
SCS: SEVERE CYCLONIC STORM (48-63KT)
VSCS: VERY SEVERE CYCLONIC STORM (64-89 KT)
ESCS: EXTREMELY SEVERE CYCLONIC STORM (90-119 KT)
SuCS: SUPER CYCLONIC STORM (\geq 120 KT)

- LESS THAN 34 KT
- 34-47 KT
- \geq 48 KT
- OBSERVED TRACK
- FORECAST TRACK
- CONE OF UNCERTAINTY



457

009

IMD, DELHI

